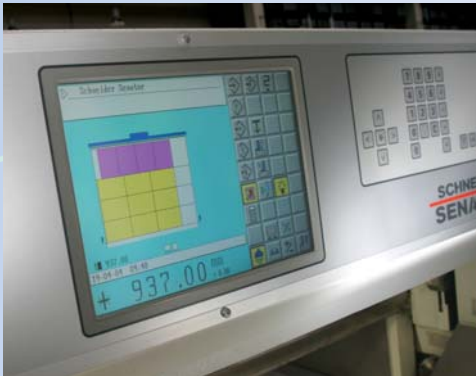


Senator Technology

E-line 185 & 260
For big cuts.



SCHNEIDER
SENATOR

Cutting Technology

Gruppe Maschinenrahmen



Cutting

High-speed cutter Senator E-Line 185 & 260

For larger formats power and precision are decisive. And it's precisely these characteristics, combined with a high degree of reliability, that you enjoy with the E-Line 185 & 260 from Schneider Senator. For problem-free sheet handling these guillotines can also be equipped with various peripheral equipment to automatic cutting lines.



Senators live longer.

These high-speed cutters can take a lot of abuse. Our decades of experience in the manufacturing of high-quality cutters guarantees a long and trouble-free run - even in non-stop production conditions. The Senators E-Line 185 & 260 are based on a solid cast iron frame. And you'll benefit from mechanical / hydraulic drive that had proven over many years. The position of flywheel and motor gives the machine an excellent weight distribution. With this compact design Schneider Senator realizes large format processing on small space.

The latest infrared safety curtains and the diverse-redundant cutting system (two independent, mutually verifying micro-processors) guarantee the highest level of safety. High-quality, specially polished, cast-iron airfilm machine tables are a great asset when it comes to handling heavy stock. The first-class price/performance ratio ensures minimum maintenance, longevity and outstanding servicability.

As an option the E-Line 185 can be delivered with a larger cutting width of 190,6 cm.

For big cuts: Fully equipped.

- High-speed cutter Senator E-Line 185 and 260 with mechanical knife drive and hydraulic clamp
- Computer-control with TFT-colour monitor
- Electrical drive equipment: 400 volts, 50 cycles (other voltage optional)
- CE & EN 1010 - conform
- Solid cast iron frame
- Pneumatic clutch with overload protection
- Ball race lead screw
- Infrared safety curtain
- Safety bolt
- Specially polished cast iron machine table, airblown
- Optical cut indicator
- 2 knives (HSS quality)
- 5 sinus cutting sticks
- Tools
- Colour: RAL 7035, light grey
- Option: "Trimm-Master" automatic waste removal (through opening of the front table)

with style.



Everything under control: The computer-control

Different control types	'C'	'CP'	'CT'
TFT-colour monitor	5"	10,4"	10,4"
Alphanumeric flat-foil keyboard with logical key blocks and mechanical pressure point keys	x	x	x
Touch-screen soft keys			x
Memory capacity:	5.700 steps	5.700 steps	5.700 steps
Number of programmes	unlimited ¹⁾	unlimited ¹⁾	unlimited ¹⁾
Diverse-redundant cutting system (two independent, mutually verifying microprocessors)	x	x	x
Graphic display of the programme flow			x
Incorrect cut control (no cut release when position tolerance is exceeded)	x	x	x
Execution of desired dimensions, without disturbing the original programme	x	x	x
Measuring system: inches / mm / cm	x	x	x
Indication of free storing spaces	x	x	x
Measurement precision: 1/100 mm	x	x	x
Service cut counter	x	x	x
Programmable cut counter	x	x	x
Air on/off	x	x	x
Fault diagnosis	x	x	x
Calculator function	x	x	x
Time and date display	x	x	x
Programme erase protection	x	x	x
Data protection in case of power failure	x	x	x
Language selection	x	x	x
IC-memory-card			x
CIP 3/4-compatible (automatic generating of cutting programmes from pre-press data)			x ²⁾
Serial interface			x ²⁾
Logging the operational data			x ²⁾
Printer port			x ²⁾
Programming options:			
Simple cut, repeat cut, programme cut	x	x	x
Digitally adjustable pre-press time	x	x	x
Differential measurement	x	x	x
Clamp pressure adjustment via display, controlled by proportional valve			x
Programming by value input or actual transmission	x	x	x
Infinitely variable backgauge speed	x	x	x
Function "no cut"	x	x	x
Linear programme correction facility	x	x	x
Percentagewise programme correction facility			x
Automatic paper ejection and programmable paper ejection marks	x	x	x
Operator information programmable			x
Cut optimizer			x
External functions, external programming			x

¹⁾ Only limited by max. steps to be stored , ²⁾ option

High-speed cutter Senator E-Line 185 & 260

E-line

Technical Data

185
260

A	Cutting width, mm / inch	1.850 / 72,83 ¹⁾	2.600 / 102,36
B	Feed depth, mm / inch	1.970 / 77,56 ²⁾	2.725 / 107,28
C	Clamp opening, mm / inch	165 / 6,50	165 / 6,50
D	Table height, mm / inch	900 / 35,43	900 / 35,43
E	Machine width - without side tables, mm / inch	3.025 / 119,09	4.020 / 158,27
F	Machine width - including side tables, mm / inch	3.650 / 143,7	4.600 / 181,10
G	Machine depth, mm / inch	3.521 / 138,62	4.670 / 183,86
H	Machine height, mm / inch	1.680 / 66,14	1.850 / 72,83
I	Front table depth, mm / inch	730 / 28,74	750 / 29,53
	Required power, kW	7,5	11,0
	Weight net, kg	6.630	10.500
	Clamp pressure, daN. min.	400	500
	max.	6.000	8.000
	Smallest cut automatic, mm / inch	100 / 3,94 ³⁾	110 / 4,33
	Smallest cut manual, mm / inch	90 / 3,54	100 / 3,94
	Knife cycle, s	1,43	1,43
	Backgauge positioning speed (frequency controlled), mm/s	0-300 / 0-11,81	0-250 / 0-9,84
	Static floor load, daN/m ²	960	900
	Contact area load, daN/cm ²	0,7	0,8
	Pressurized air required, bar	6	6

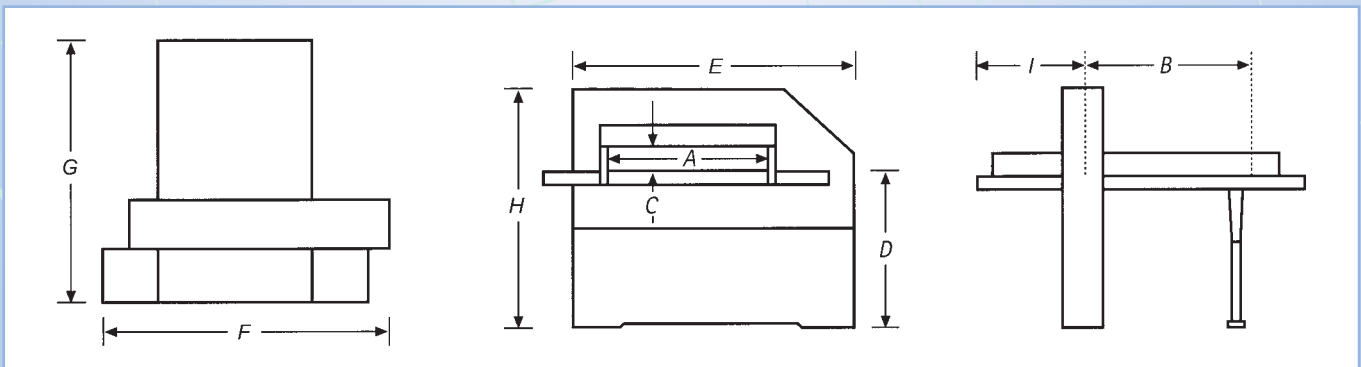
Subject to technical modifications. Errors excepted.

¹⁾ Can be ordered with a larger cutting width: 1906 mm

²⁾ Feed depth for shortened smallest cut: 1920 mm

³⁾ Optional: shortened smallest cut 60 mm or 40 mm with reduction of the max. clamp pressure

Measurements



SCHNEIDER SENATOR

Cutting Technology

Printed in Germany, 04.2004