

Bundle Film-Wrapping

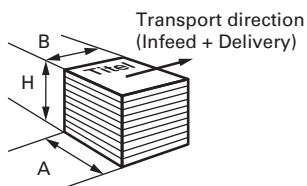
Technical Data



6254 Film-Wrapping Machine (FW48)

Stack size

(In Infeed direction)



Length	B	120 – 480 mm (4 11/16" – 18 7/8")
Width	A	200 – 480 mm (7 7/8" – 18 7/8")
Height	H	5 – 400 mm (3/16" – 4")

Capacity (size and film dependent)

Up to 30 stacks/min.

Belt speed

14 – 32 m/Min.

Film roll width

200 – 600 mm (7 7/8" – 23 5/8")

Film roll diameter

75 – 300 mm (3" – 11 3/4")

Film thickness

12 – 100 µm

Electrical power requirement

4,5 kW

Compressed air consumption

6 bar

30 Nm³/h

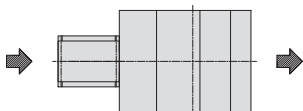
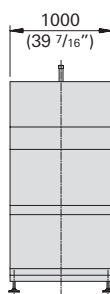
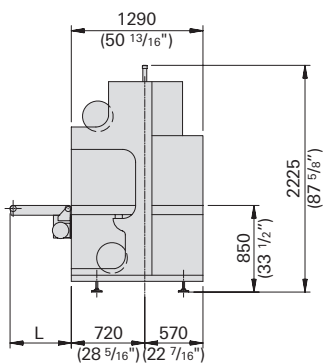
Vacuum requirement

(if without vacuum pump option)

100 Nm³/h at 15% vacuum

Weight

688 kg (1517 lb)



L = 600 (23 5/8")
L = 800 (31 1/2")
L = 900 (35 7/16")

6257 Film-Wrapping Machine (FW67)

Stack size

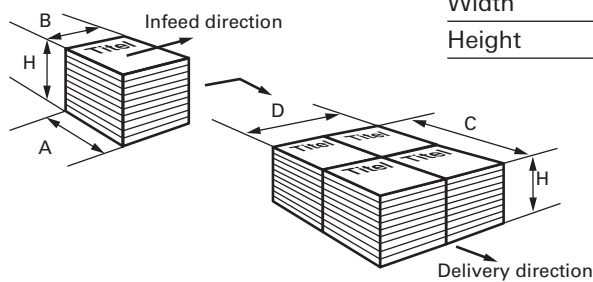
(in infeed direction)

Length B 148 – 420 mm (5 7/8" – 16 1/2")

Width A 120 – 350 mm (4 11/16" – 13 13/16")

Width D 297 – 420 mm (11 11/16" – 16 1/2")

Height H 30 – 400 mm (1 1/4" – 4")



Capacity (size and film dependent)

Up to 23 stacks/min.

Belt speed

14 – 32 m/min.

Film roll width

200 – 600 mm (7 7/8" – 23 5/8")

Film roll diameter

75 – 300 mm (3" – 11 3/4")

Film thickness

12 – 100 µm

Electrical power requirement

4,5 kW

Compressed air consumption 6 bar

20 Nm³/h

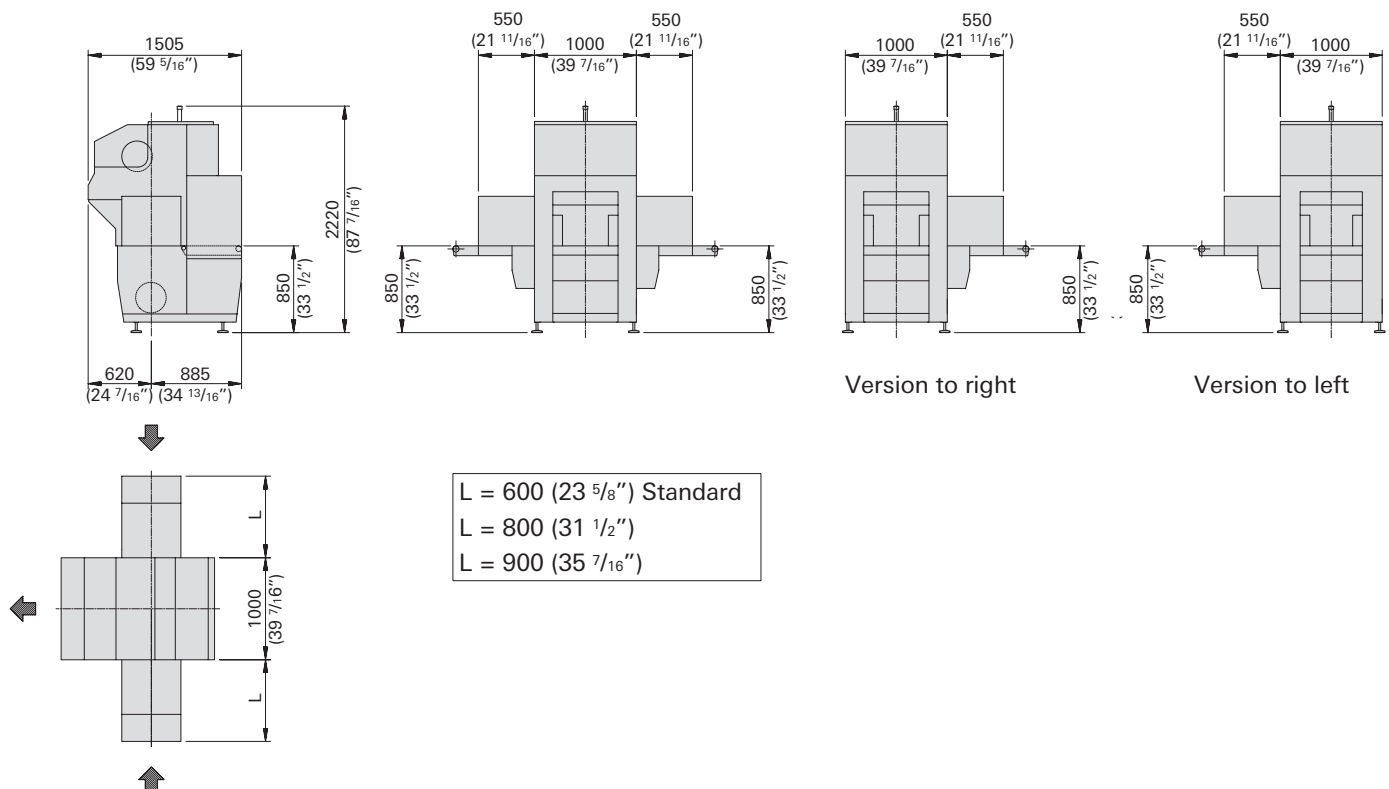
Blow air requirement

100 Nm³/h at 0,1 bar

(if without air blast option)

Weight

720 kg (1587 lb)

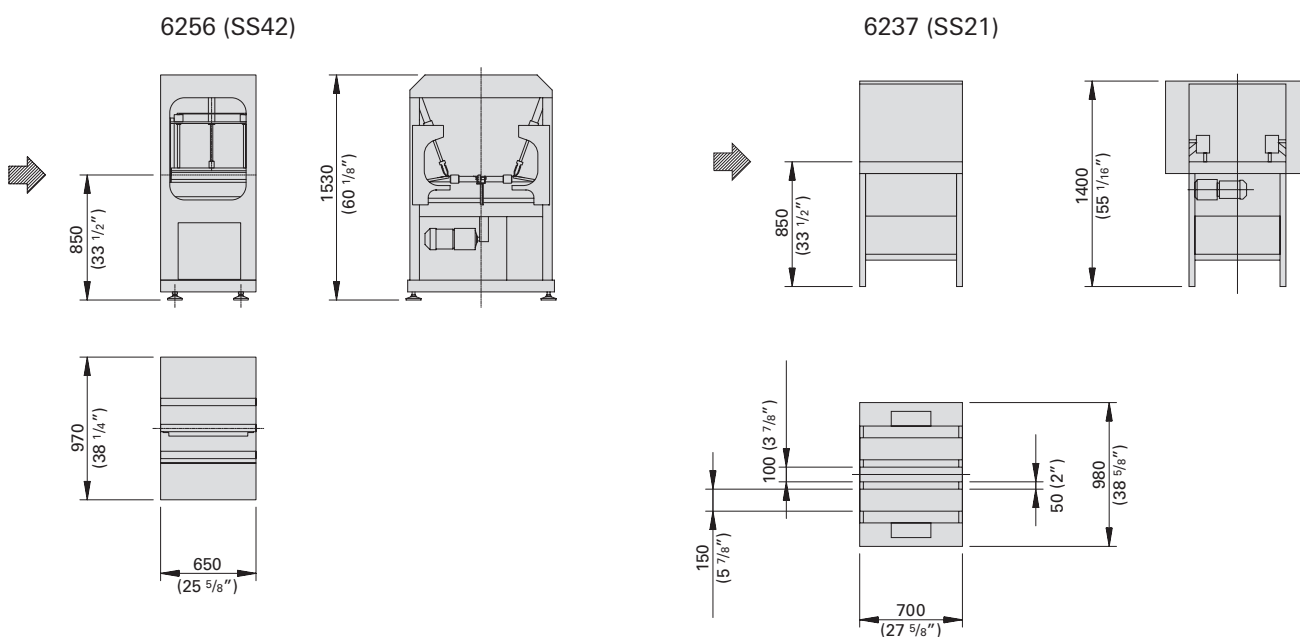


Side sealer for FW48: 6237 (SS21)

Size Stack (in infeed direction)	Length	B	200 – 420 mm (7 7/8" – 16 1/2")
	Width	A	265 – 420 mm (10 7/16" – 16 1/2")
	Height	C	5 – 50 mm (3/16" – 2")
Capacity (size and film dependent)	Up to 28 stacks/min.		
Electrical power requirement	3,7 kW		
Compressed air consumption	6 bar	3 Nm ³ /h	
Weight	125 kg (275.5 lb)		

Side sealer for FW48: 6256 (SS42)

Size Stack (in infeed direction)	Length	B	200 – 420 mm (7 7/8" – 16 1/2")
	Width	A	160 – 420 mm (6 5/16" – 16 1/2")
	Height	C	5 – 80 mm (3/16" – 2")
Capacity (size and film dependent)	Up to 25 stacks/min.		
Electrical power requirement	4,5 kW		
Compressed air consumption	6 bar	7 Nm ³ /h	
Weight	300 kg (661 lb)		

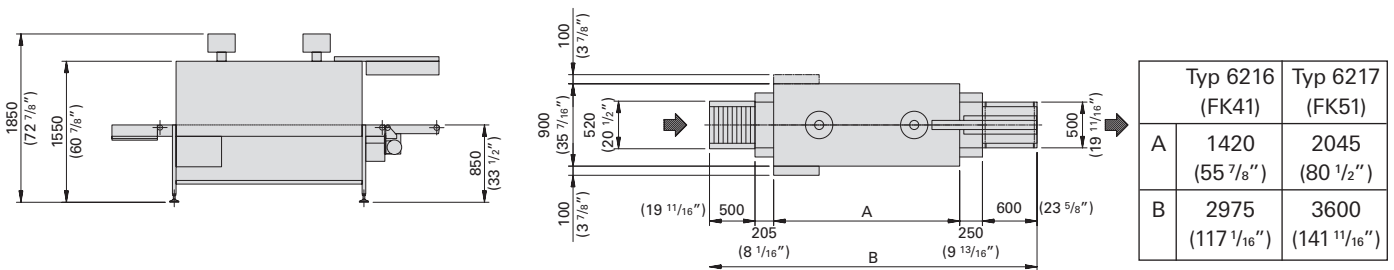


6216 Shrink tunnel (FK41)

Stack size (in infeed direction)	Length	B	120 – 480 mm (4 11/16" – 18 7/8")
	Width	A	120 – 420 mm (4 11/16" – 16 1/2")
	Height	C	400 mm (15 3/4")
Film thickness	20 – 100 µm		
Capacity (size and film dependent)	Up to 20 stacks/min.		
Temperature range	160 – 200° C (310°–392° F)		
Electrical power requirement	14 kW		
Weight	500 kg (1102 lb)		

6217 Shrink tunnel (FK51)

Stack size (in infeed direction)	Length	B	120 – 480 mm (4 11/16" – 18 7/8")
	Width	A	120 – 420 mm (4 11/16" – 16 1/2")
	Height	C	400 mm (15 3/4")
Film thickness	20 – 100 µm		
Capacity (size and film dependent)	Up to 30 stacks/min.		
Temperature range	160 – 200° C (310°–392° F)		
Electrical power requirement	17 kW		
Weight	650 kg (1433 lb)		



Müller Martini Marketing AG
 Untere Brühlstrasse 13
 CH-4800 Zofingen, Switzerland
 Phone +41 (0)62 745 45 75
 Fax +41 (0)62 751 55 50
 info@mullermartini.com
 www.mullermartini.com

MÜLLER MARTINI