

## Press Integration



# :Arkitex AutoPlan

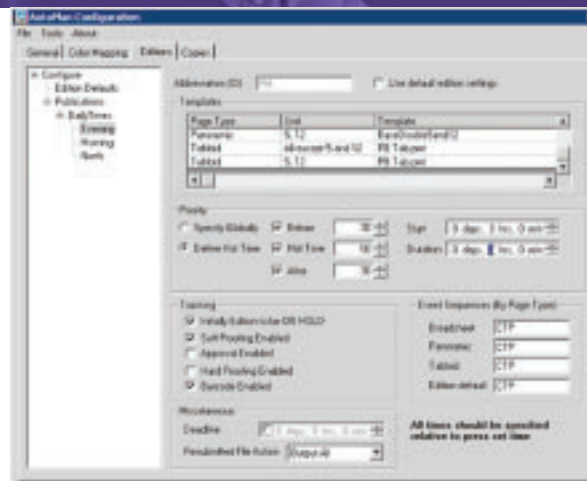
## Making end-to-end workflow automation a reality.

Our years of experience integrating the front end with the press have given us an edge.

We thoroughly understand the complexities of the production workflow. And what needs to be done to optimise productivity.

:AutoPlan minimises manual intervention by automating the planning process. It also reduces human errors by transforming complex tasks into simple instructions. :AutoPlan works with a growing list of planning systems.

So if press integration is missing from your workflow system, :Arkitex has the solution.



### Automatic Setup

:AutoPlan takes instruction from the press plan and automatically sets up editions, page counts, colours, plate positions, etc. For those without an automated press planning system, :AutoPlan can also accept plans from editorial planning or ad dummieing systems. It defines the target production, checks for press compatibility, and ensures that the right plates are produced in the right quantity at the right time, on the right engines, saving you time and headaches.

# :Arkitex AutoPlan

## **Naming Flexibility**

:AutoPlan configuration allows easy integration with prepress file naming schemes.

## **Plate Verification**

:AutoPlan writes barcodes or labels onto each plate for easy plate tracking and identification for press.

## **:Arkitex Workflow**

:Arkitex tracks plate progress all the way to mounting on press to identify bottlenecks and send operator alerts. :Arkitex Client displays a colour-accurate softproof of the final plate in the pressroom and includes a densitometer for calibration, ICC profiles and support for coloured newsprint.

## **Seamless Integration**

:AutoPlan integrates easily with your planning systems, including XML, ABB, EAE, GOSS, MAN Roland, PPI and Rockwell Automation.

## **Customisation**

For custom applications, :Arkitex Specialist provides consultancy to analyse all or any part of your workflow to determine the exact functions needed to optimise productivity and give you cost-saving workflow control.



Argentina, (Paraguay and Uruguay), Tel.: 54-11-4958-5767  
Australia, Tel.: 03 9279 6300  
Austria, Tel.: 43-1-89112-3290  
Belgium, Tel.: 32-3-450-98-66  
Belgium, Direct Export  
Tel.: 32-3-444-7120  
Brazil, Tel.: 55-11-5188-6444  
Canada, Tel.: 416-241-1110 Ext: 4053

or 877-753-2432 toll free  
Caribbean and Central America,  
Tel.: 305-2135311  
Chile, (Bolivia, Equador, Peru)  
Tel.: 56 2 360 7600  
China, Hong Kong Tel.: 852-2555-9421  
Colombia, Tel.: 571 425 2790  
Czech Republic, Tel.: 420-2-6610-1623  
Denmark, Tel.: 45-4326-6766

Finland, Tel.: 358-9-8878-319  
France, Tel.: 33-1 47 32-6905  
Germany, Tel.: 49-221-5717-0  
Greece, Tel.: 30-1-570-6500  
Hungary, Tel.: 361-212-1540  
Ireland, Tel.: 353-1-450-6733  
Italy, Tel.: 39-02-3074-220  
Japan, Tel.: 81-3-5704-3140  
Korea, Tel.: 82-2-2262-4200

Luxembourg, Tel.: 352-44-20-441  
Malaysia, Tel.: 603 7957 4200  
Mexico, Tel.: 52-55-52-767600  
Netherlands, Tel.: 31-70-413-1211  
New Zealand, Tel.: 64-9-443-5500  
Norway, Tel.: 47-67 06 88 00  
Poland, Tel.: 48-22-572-3940  
Portugal, Tel.: 351-21 414-6700  
Singapore, Tel.: 65-6214-0110

South Africa, Tel.: 27-11-921-5911  
Spain, Tel.: 34-93-476-7600  
Sweden, Tel.: 46-8-793-0100  
Switzerland, Tel.: 41-1-823-7111  
Taiwan, Tel.: 886-2-2516-8899  
UK, Tel.: 44 20 8231 4929  
USA, Tel.: 800-227-2780  
Venezuela, Tel.: 58 212 263 6344

© Copyright 2003 by Agfa-Gevaert N.V. All rights reserved. Printed in Belgium.  
AGFA and the Agfa rhombus are registered trademarks of Agfa-Gevaert AG.  
:Arkitex AutoInk and :Arkitex AutoPlan are trademarks of Agfa-Gevaert N.V., Belgium.  
All other trademarks are the property of their respective holders.  
All product specifications are subject to change without notice.  
Appearance of equipment ordered may differ from that equipment shown in photographs.

[www.agfa.com](http://www.agfa.com)

**AGFA** 

| see more | do more