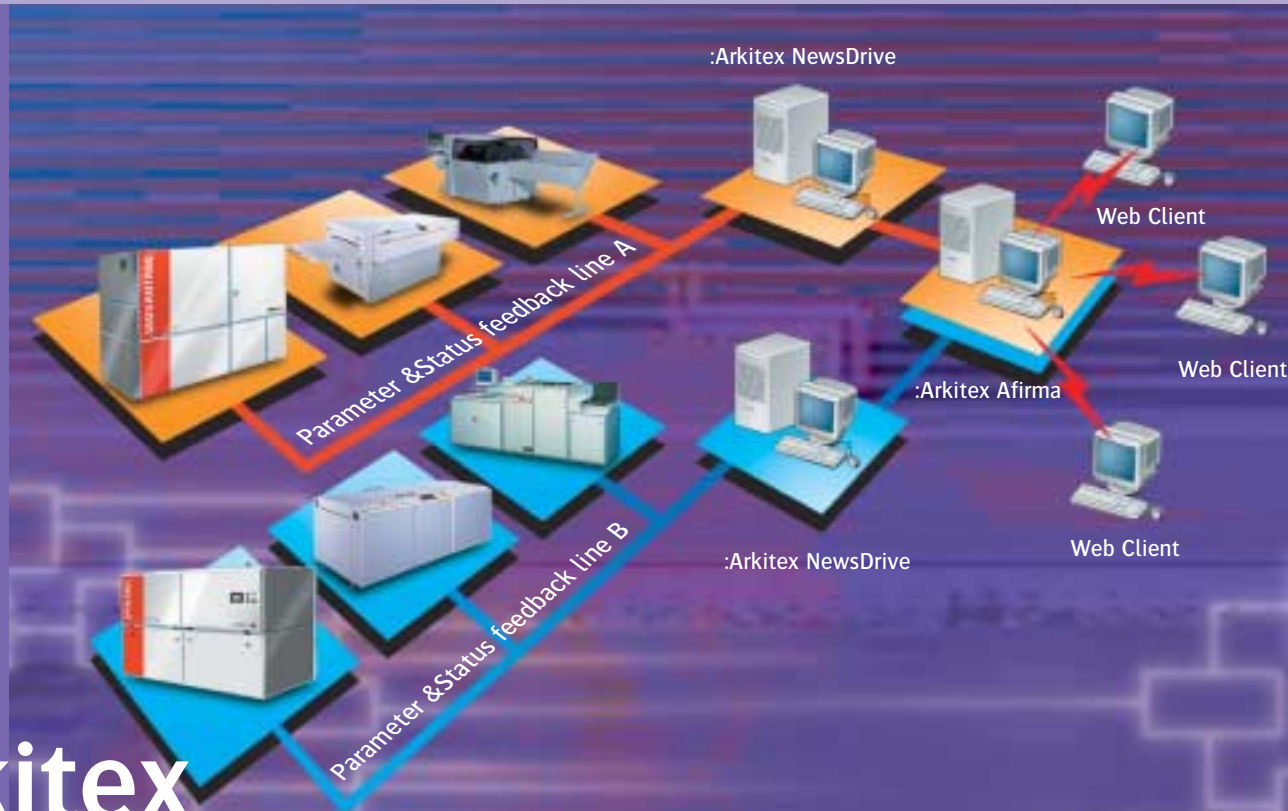


Managing Plate Production Systems



:Arkitek Afirma

Process Control for Digital Plate Production

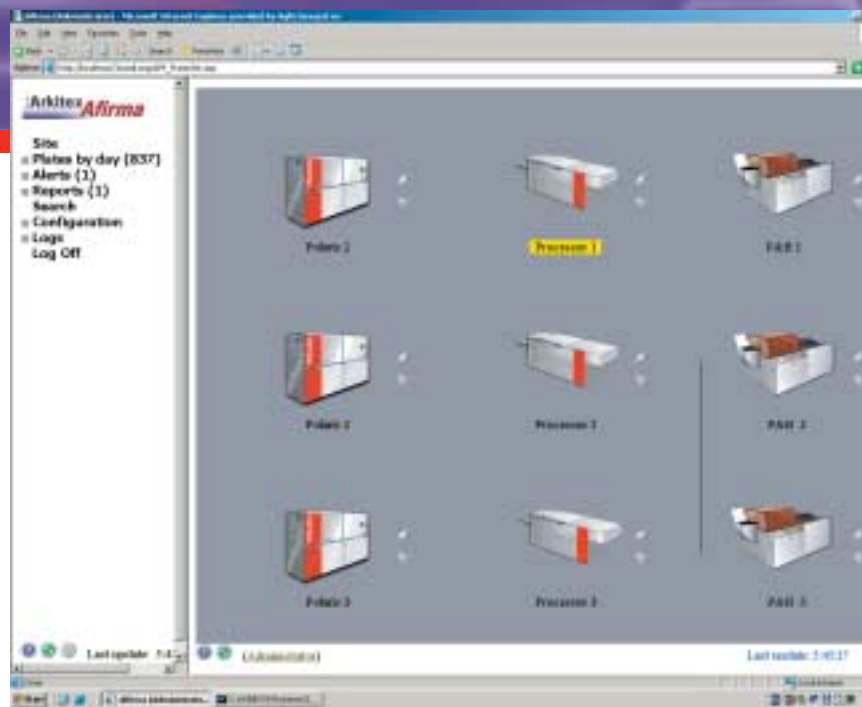
Newspapers that manage multiple CtP systems with minimal staff understand the importance of unattended process control, especially when quality is a number one priority.

:Afirma removes the burden of quality assurance while giving you complete control of your digital plate-making operation.

Health Monitoring: a Simple Solution to a Complex Task

While CtP has shortened the plate-making process and improved quality, there are still a number of variables that can affect imaging accuracy — unexpected temperature changes for example, processing variations, or punch and bender misalignments. Keeping a constant eye on every variable can be labour-intensive and costly. Not any more.

:Arkitek Afirma automatically monitors and tracks all the parameters that can cause even the slightest deviation from your quality standard. It gives you maximum control of your digital plate-making operation with minimal effort.



:Arkitek Afirma site overview via an easy-to-use web interface.

:Arkitex Afirma

The first system wide approach to controlled CtP plate production

All CtP systems—regardless of the imaging technology or the quality of the equipment—have variables which affect plate performance on press. :Afirma ensures that any deviations from the quality standards will immediately be signaled. :Afirma is an enabler of true computer integrated plate production.

:Arkitex Afirma: Keep it Simple !

:Arkitex Afirma is designed to secure quality while maximising productivity. It saves time and money by reducing labour and avoiding waste.

:Arkitex Afirma provides real-time machine status of the whole plate production process. This proactive solution continuously monitors all vital production parameters using sensors in the platesetter and processor to ensure values stay within tolerance. It lets you view all reported values with ease using a Web browser. Automated alarm triggers provide an early warning of any problem. Detailed reporting, using graphs, makes it easy to review the last shift, or any previous production. It also monitors plate consumption and volume. :Arkitex Afirma reports allow Agfa service experts to efficiently analyse data.

Parameter Feedback

Agfa :Polaris and :Advantage platesetters using :N91v photopolymer plates are :Arkitex Afirma ready. CtP parameters include engine status, plates per hour, current resolution and selected cassette. Agfa Polymer plate processors are :Arkitex Afirma ready. Processor parameters include engine status, pre-heat temperature, developer temperature, different roller speeds and square meters of plates processed. :Arkitex Afirma allows the possibility of integrating feedback from your punch bender solution, incorporating it into a complete system. Through utilising punch bender, you have the ability to include the video alignment results and status.

Stay Ahead. With Agfa.

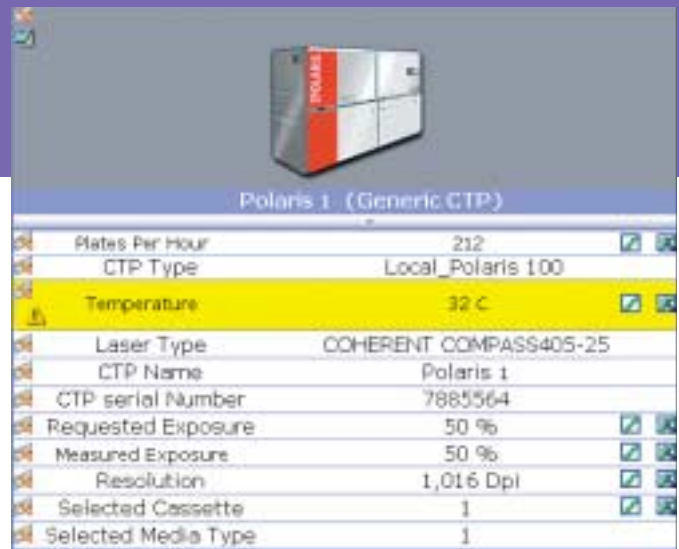
An updated list of our sales organisations is available on www.agfa.com

© Copyright 2006 by Agfa-Gevaert N.V. All rights reserved. Printed in Belgium.

Agfa, the Agfa-rhombus, :Arkitex, :Arkitex Afirma, :Advantage and :Polaris are trademarks of Agfa-Gevaert N.V. or its affiliates.

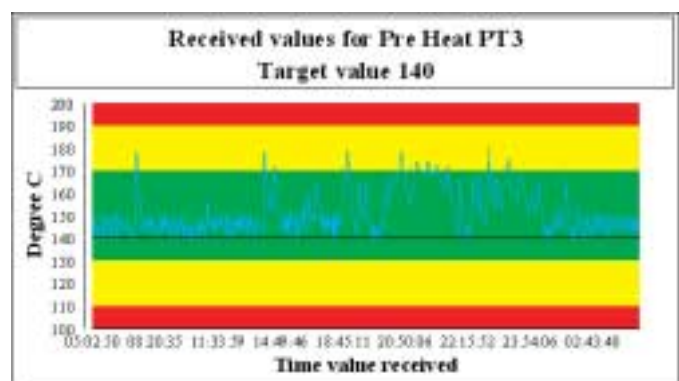
All product specifications are subject to change without notice.

NGLZ7 GB 00200610



Polaris 1 (Generic CTP)	
Plates Per Hour	212
CTP Type	Local_Polaris 100
Temperature	32 C
Laser Type	COHERENT COMPASS405-25
CTP Name	Polaris 1
CTP serial Number	7885564
Requested Exposure	50 %
Measured Exposure	50 %
Resolution	1,016 Dpi
Selected Cassette	1
Selected Media Type	1

Health monitoring: Possibility to monitor every single parameter.



Daily Reporting, including Graphs

Ease of Use

Easy operation is another key benefit that goes straight to the bottom line. An intuitive Web Interface shows the status of every component with a clear display of where a problem is occurring. Pull up a graph instantly to see the behaviour of that parameter over a selected period of time. You'll know immediately if this is a recurring problem or an isolated incident. Because errors are so easy to identify with in-depth data for quick decision making, :Arkitex Afirma saves time and money. Using the reporting functionality will inform you about last shift's production details for feedback or archiving purposes.

AGFA 